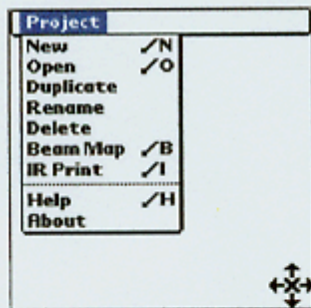


To move a node simply tap the stylus in the center of the node and drag it to a new location. Edges will also move to follow any nodes they are attached to. It is important to remember that edges are directional, thus you can have two edges between two nodes going in different directions.

To move around in PiCoMap, use the arrow buttons in the lower right hand corner of the screen. To return to the original starting position, tap the "x" in the center of the arrows.

The Menu Bar



New: Begins a new PiCoMap
Open: Opens an existing PiCoMap
Duplicate: Will duplicate the current document
Rename: Changes the name of the current PiCoMap
Delete: Deletes a created PiCoMap
Beam Map: Share your map PiCoMap with other people
IR Print: Print your PiCoMap directly using IR

Help: Displays tips about PiCoMap
About: Displays information about the program

As with all Palm OS applications a menu bar can be accessed by tapping the menu icon located near the graffiti area of your Palm Handheld.